

## Order Information concerning Spare Parts List

When placing orders for Spare Parts, please give only the order numbers listed in the spare parts list.

The order number can refer to 1 piece or 1 repair set, (multiple quantity).

The minimum order quantity for each order number must correspond with the packed quantity or multiples of the packing quantity.

Examples:

1. An customer orders 10 pieces

Quantity delivered 1 package with 10 pieces V04711

Price charged 10 \* V04711 at 0,90 EUR each, total price = 9,00 EUR

(minimum price)

2. A customer orders 3 pieces

When booking the order in the EDP, the order quantity is automatically increased to 10 pieces.

Order quantity and price charged, see para. 1.

3. A customer orders 16 pieces

When booking the order, the order quantity is automatically increased to the next higher packing quantity - 20 pieces.

Quantity delivered 2 packages with 10 \* V04711 each

Price charged 20 \* V04711 at 0,90 EUR each, total price = 18,-- EUR

A repair-exchange (RE) is normally only carried out, if a repairable part has been returned by the customer. At customer's request Dräger however, Dräger will charge the list price for the new part if customer's old part is not received within a period of 3 calendar weeks.

Information concerning the handling of spare parts sets in case of repair:

For technical reasons, it is always necessary to exchange complete sets. Only in this way, the correct functioning of the repaired device can be ensured.

Internal: Spare parts list for technician

**Dräger**safety

Subject to change without n

List on Change

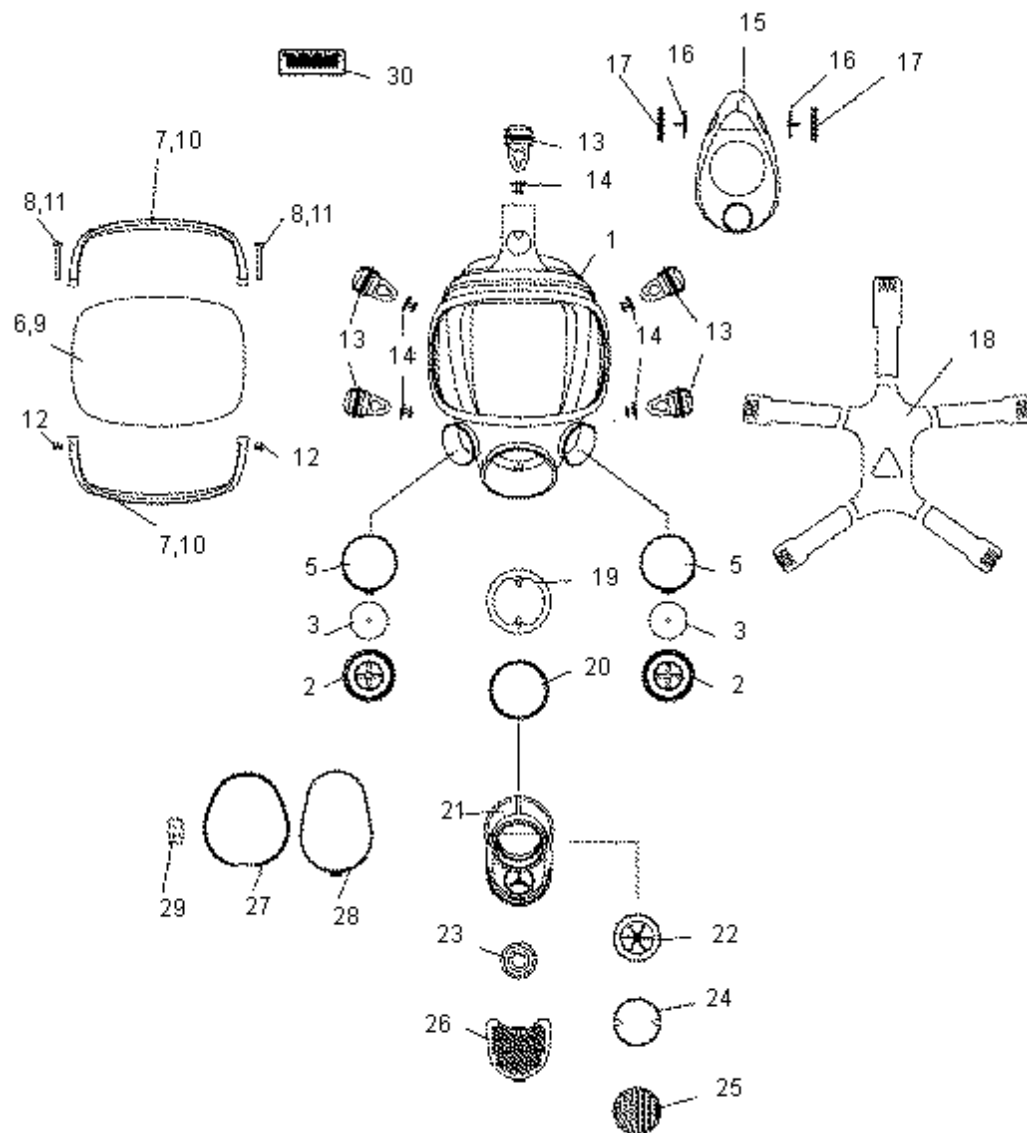
Spare Part List  
X-PLORE 5500

Edition date  
07.08.2008

Spare Part List  
1412.860

R55270, R56655

Page: 1  
Image: 1



Internal: Spare parts list for technician



Subject to change without n

List on Change

Spare Part List  
X-PLORE 5500

Edition date  
07.08.2008

Spare Part List  
1412.860

R55270, R56655

Page: 2  
Image: 1

POSITION	DESIGNATION	PART- NUMMER	ORDER CODE	PACK. QTY.
1-25,30	X-plore 5500 PC		R55270	
1-5,9-30	X-plore 5500 Triplex		R56655	
1	Mask body EPDM (Cl2)		R55266	
2	Valve disc		R51488	10
3	Filter Connector left		R55263	
4	Filter Connector right		R55262	
5	Clamp		R54748	
6	Visor Polycarbonate		R50833	
7	Clamping frame, plastic blue		R55273	
8	Screw DWN 562 3x20 (Torx)		1390006	10
9	Visor Triplex glass		R26989	
10-12	Repair Kit stainless steel Frame		R23117	
10	Clamping frame, stainless steal		R50146	
11	Screw DIN 7985 M4x22 (Torx)		1390008	10
12	Self locking nut M4 DIN985-A4		1336002	20
13	Sliding buckle		R28329	10
14	Double button		RM08910	15
15	Inner mask EPDM		R52822	
16	Control valve disk		RM08304	10
17	Valve seat		RM08303	10
18	Headstrap EPDM		R26279	
19	Screw ring		R54442	4
20	O-ring		T10549	10
21	Connector piece		R52995	
22	Valve seat		R53870	10
23	Exhalation valve disk		R52541	5

Internal: Spare parts list for technician



Subject to change without n

List on Change

Spare Part List  
X-PLORE 5500

Edition date  
07.08.2008

Spare Part List  
1412.860

R55270, R56655

Page: 3  
Image: 1

POSITION	DESIGNATION	PART- NUMMER	ORDER CODE	PACK. QTY.
24	Test plug X-plore 5500		R55267	10
25	Cap		R55268	
26	Cap black		R52552	5
27	Sliding ring		R52184	10
28	Clamp		R52185	10
29	Support plate		R53179	10
30	Barcode Label inside		AG02550	500
	Accessories:			
31	Lens overlay selveadhesive (pkg of 25)		4055092	
32	Neckstrap Complete, CR/NR		RM08524	